

CERTIFICATE OF LOCATION OF GOVERNMENT CORNER

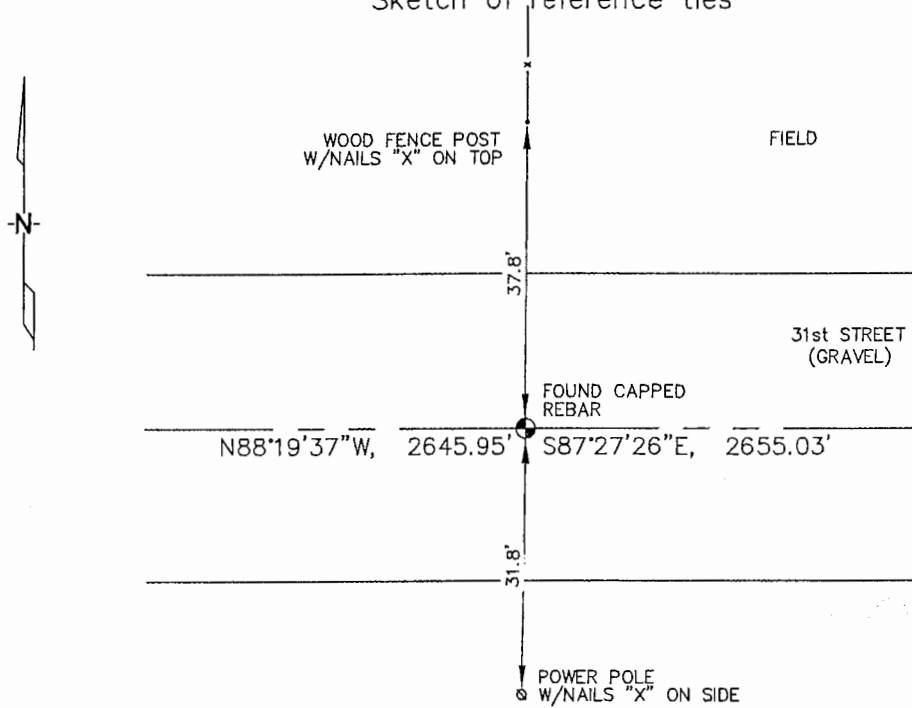
NORTH 1/4 Corner of Section 20, Township 105, Range 42, 5TH P.M.

STATE OF MINNESOTA, County of MURRAY

At the corner location shown on the sketch :

- On 3/13/2006 found REBAR WITH AN UNREADABLE CAP IN GRAVEL
ROAD, OPPOSITE FENCE LINE RUNNING NORTH.
- left monument as found, lowered monument, removed monument (explain)
- On _____ set _____

Sketch of reference ties



N: 659,277.32
 E: 2,120,078.65
 MN SOUTH, NAD 83
 NOT TO SCALE

Statement of evidence relative to this corner location is on back page

I hereby certify that this document and the data contained herein was prepared by me or under my direct supervision.

Thomas V. Jeff 5/4/06
 Thomas V. Jeff Date

Registration No. 44563

- Land Surveyor, Professional Engineer
 County Surveyor, County Engineer

OFFICE OF THE COUNTY RECORDER

County of _____

SEP 28 2006

I hereby certify that this document was filed in the Co. Recorders office at _____ .M. on the day of _____ A.D. , 20

County Recorder James V. Johnson
 By _____, Deputy

DOCUMENT NO. _____

STATEMENT OF EVIDENCE:

NORTH 1/4 CORNER, SECTION 20, T. 105 N., R. 42 W.,
MURRAY COUNTY, MINNESOTA

- 1861 D.W. Wellman & S.S. Smoot, US. Deputy Surveyors,
monumented corner.
- 11/9/1912 Murray Co. found a large gray stone on corner; "unclear" tie info.
- 4/2/1999 Zieske Land Surveying, Inc., Perry Zieske, RLS, set a 1" iron pipe on
corner.
Tie: 2636.59' to center of section .
- 3/13/2006 Ulteig Engineers, Inc., Survey Crew, Brain Payne Party Chief, found
a rebar with an unreadable cap.
Ties: N-37.81' to nailed "X" on wood fence post;
S-31.8' to nailed "X" on power pole;
E-2655.03' to NE corner, Section 20;
W-2645.95' to NW corner, Section 20.